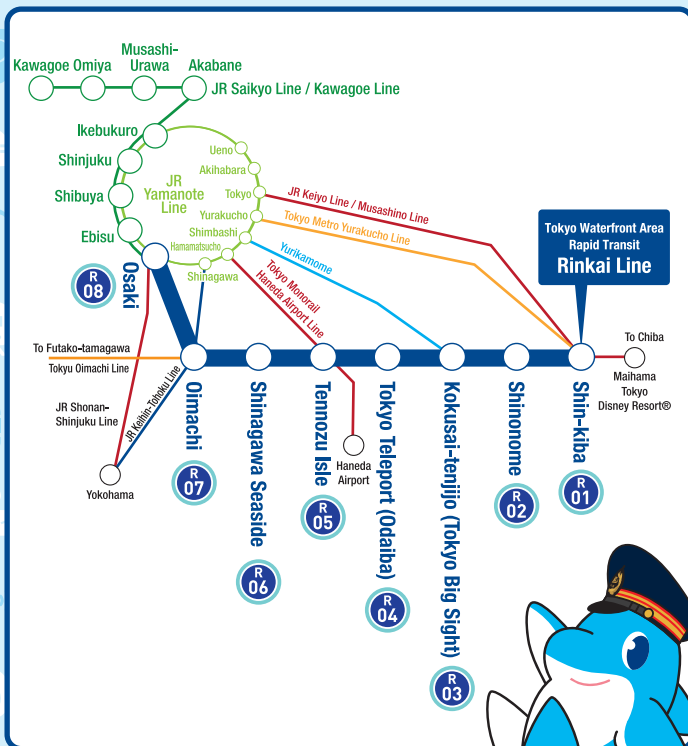


Rinkai Line Route Map



◀ ◀ ◀ Rinkai Line ▶ ▶ ▶

Disaster Prevention Handbook



Prepare
for
disasters!

Contact us

☎ 03-3527-6760

Hours

9:00 ~ 17:00

*Except Saturdays, Sundays, national holidays, etc.

Website

<https://www.twr.co.jp>



Rinkai Line

Tokyo Waterfront Area Rapid Transit, Inc.



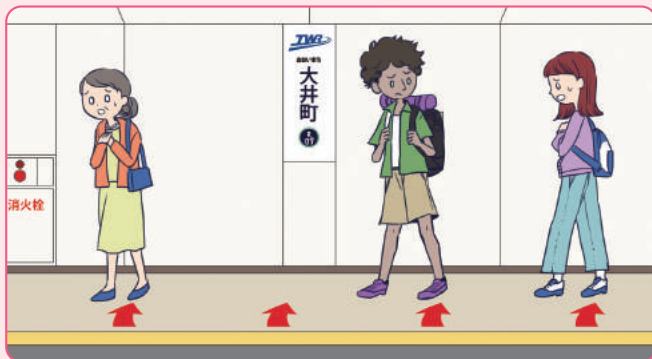
Rinkai Line

Tokyo Waterfront Area Rapid Transit, Inc.

In Case of an Earthquake

On a platform

Stand clear of the platform edge, take extra care so as not to fall onto the rail tracks.



Watch out for falling objects.



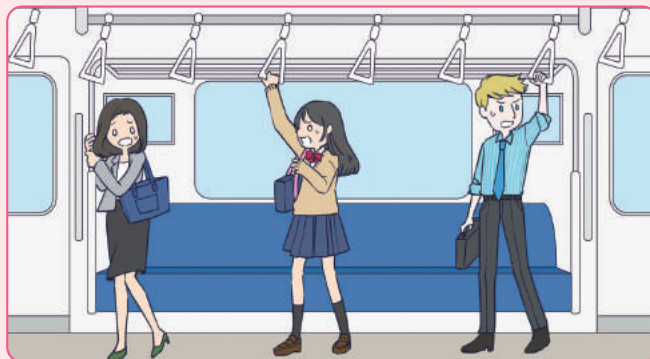
Train auxiliary lighting / Station emergency lighting

In the event of a power failure, the train auxiliary lighting will turn on by battery power and the broadcasting / communication systems will be available for a fixed period of time. In addition, the emergency lighting in the station yard will turn on.



On a train

Hold on to the nearest strap or handrail.



Watch out for falling objects.



Early earthquake warning system

The system alerts the train crew to an earthquake over the train's public address system using the "emergency earthquake early warning system" distributed by ANET CO., LTD., just before strong shaking occurs, and immediately stops the train. After the train stops, the situation is reported over the train's public announcement system.



The train stops safely, and then moves

*We use the emergency earthquake early warning system. In the event that strong shaking is measured on our seismometer, all facilities, etc., will be inspected according to its strength.

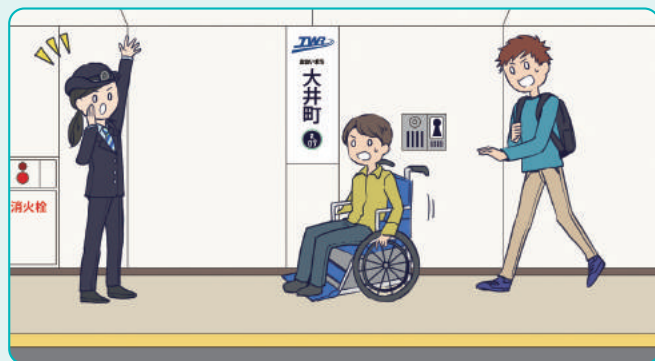
to the nearest station after confirming safety.

event that strong shaking is measured on our seismometer, all facilities, etc., will be

After an Earthquake

On a platform

Evacuate the platform as instructed by the station staff.



Act in a calm manner.



Earthquake countermeasures of facilities

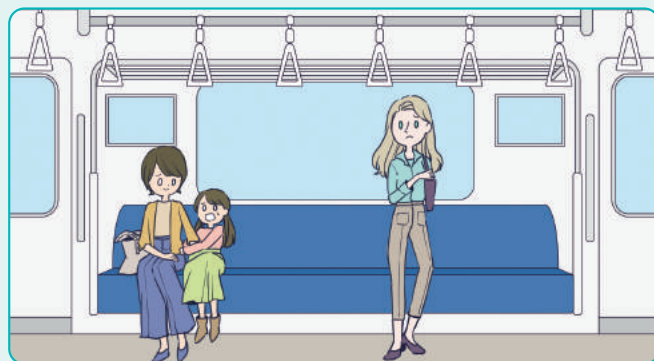
Infrastructure including stations, tunnels and viaducts have been constructed to withstand epicenter earthquakes as large as the Great Hanshin-Awaji Earthquake. Train service will resume after confirming safety.



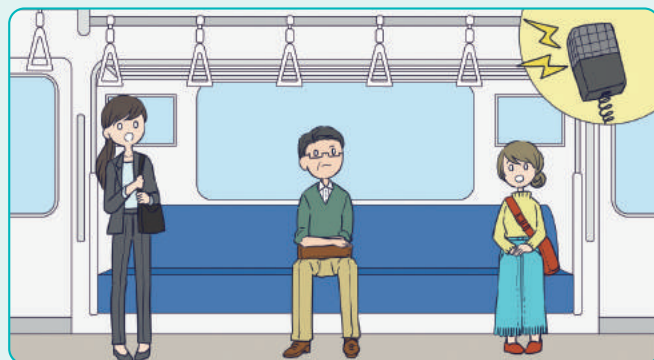
Do not hurry out of the train. Walk in a calm manner out of the train only when instructed by the train crew. Otherwise,

On a train

Do not hurry out of the train.



Carefully listen to the train's public address announcement.



It is important to act in a calm manner!



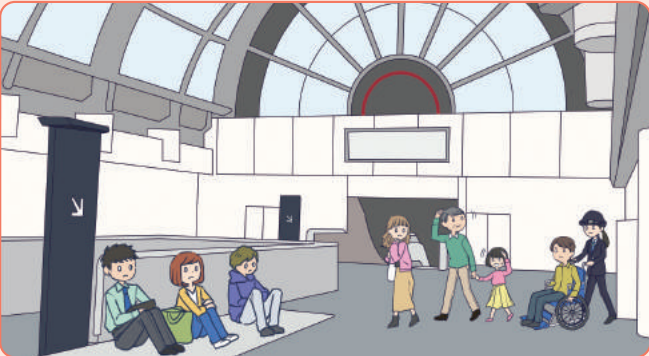
When it Takes Time to Resume

When a large-scale earthquake occurs, the station staff will confirm the state of damage to the equipment in the station yard, and then guide passengers to a safe place.



- *Please act in a calm manner and follow instructions as aftershocks and power failure may occur.
- *In case of a large-scale earthquake, etc., temporary shelters along the railroad lines will be provided by the national and local governments, and some private businesses.

The Rinkai Line will make part of its premises and station yard available and provide a temporary evacuation area until passengers are moved to a temporary shelter.



Even if it is judged that remaining in the station yard is dangerous and passengers cannot be taken to an evacuation site due to a shortage of space, we will make every effort to make toilets and pay phones available and provide the latest information in cooperation with the related agencies.

*Depending on the results of the safety confirmation in a station yard, evacuation sites, toilets and pay phones may not be temporarily available.

Temporary shelters along the Rinkai Line (as of May 30, 2019)

Nearest Station	Facility Name	Address
Shin-Kiba Station	Wakasu Seaside Park Yacht Training Center	3-1-1 Wakasu, Koto-ku, Tokyo
Shinonome Station	Tokyo Tatsumi International Swimming Center	2-8-10 Tatsumi, Koto-ku, Tokyo
Kokusai-tenjijo Station	Ariake Tennis Park, Tennis Courts	2-2-22 Ariake, Koto-ku, Tokyo
	Tokyo International Exhibition Center (Tokyo Big Sight)	3-11-1 Ariake, Koto-ku, Tokyo
	TFT Building	3-6-11 Ariake, Koto-ku, Tokyo
	Ariake Park Building	3-7-11 Ariake, Koto-ku, Tokyo
	Ariake Frontier Building	3-7-26 Ariake, Koto-ku, Tokyo
Tokyo Teleport Station	Odaiba Seaside Park	1 Daiba, Minato-ku, Tokyo
	Daiba Frontier Building	2-3-2 Daiba, Minato-ku, Tokyo
	Tokyo Metropolitan Industrial Technology Research Institute, Headquarters	2-4-10 Aomi, Koto-ku, Tokyo
	TIME24 Building	2-4-32 Aomi, Koto-ku, Tokyo
	Telecom Center Building	2-5-10 Aomi, Koto-ku, Tokyo
Tennozu Isle Station	Tokyo Port Construction Office	3-9-56 Konan, Minato-ku, Tokyo
Shinagawa Seaside Station	Tokyo Metropolitan College of Industrial Technology, Shinagawa Campus	1-10-40 Higashi-oi, Shinagawa-ku, Tokyo
	Tokyo Metropolitan Vocational Skills Development Center	3-31-16 Higashishinagawa, Shinagawa-ku, Tokyo
Oimachi Station	Shinagawa City Hall	2-1-36 Hiromachi, Shinagawa-ku, Tokyo
	Shinagawa Metropolitan Tax Office	2-1-36 Hiromachi, Shinagawa-ku, Tokyo
	Curian (Shinagawa General Citizen Hall)	5-18-1 Higashi-oi, Shinagawa-ku, Tokyo
Osaki Station	Osaki Dai-ni Citizens' Ward Assembly Hall	2-9-4 Osaki, Shinagawa-ku, Tokyo
	Osaki High School	2-1-7 Yutakacho, Shinagawa-ku, Tokyo

*Please contact each ward office for the latest information on temporary shelters.

Tokyo Metropolitan Disaster Prevention Map by Tokyo Metropolitan Government, Bureau of General Affairs <https://map.bousai.metro.tokyo.lg.jp>



Measures for those left stranded

Necessary supplies for temporary evacuation in a station yard (drinking water, simple mats and temporary / portable toilets) are prepared at all stations.



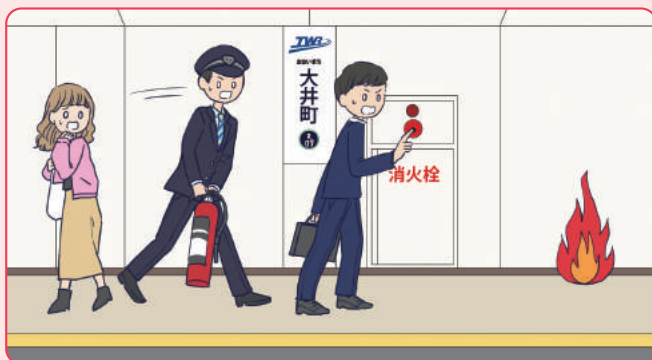
In Case of a Fire

On a platform

Please evacuate to a safe place in a calm manner as instructed by the station staff.



Push the fire alarm button to alert others.



Measures for a fire at a station

Hard-to-burn and hard-to-melt materials* are used in the construction of all station facilities. In case of a fire, automatic fire alarms, sprinklers, guide lighting, etc., are installed throughout each station. If a fire is detected, push the fire alarm button or inform the station staff of the fire.

*Non-flammable or flame-retardant materials meet national standards.



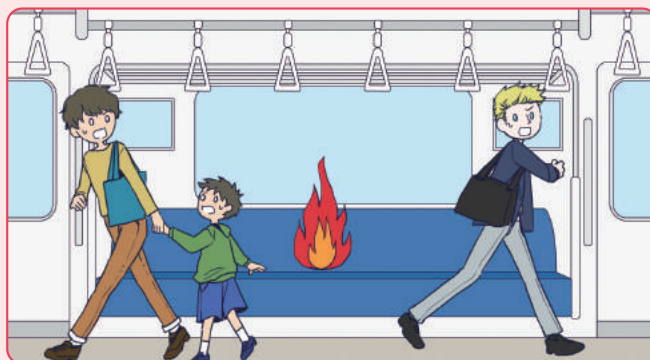
If a fire occurs while a train is running, the train will be driven to the nearest station possible. When the train arrives at the station, passengers can evacuate the train as instructed by the train

On a train

Push the installed emergency call button in a safe train car to inform the train crew of a fire.

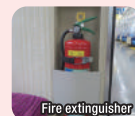


Evacuate to a safe train car.



Measures for a fire on a train

Hard-to-burn and hard-to-melt materials* are used in the construction of all train cars. In the case of a fire, evacuate to a safe train car and push the installed emergency call button in the train car to inform the train crew of a fire. A fire extinguisher is installed in each train car and can be used for initial fire extinguishing.

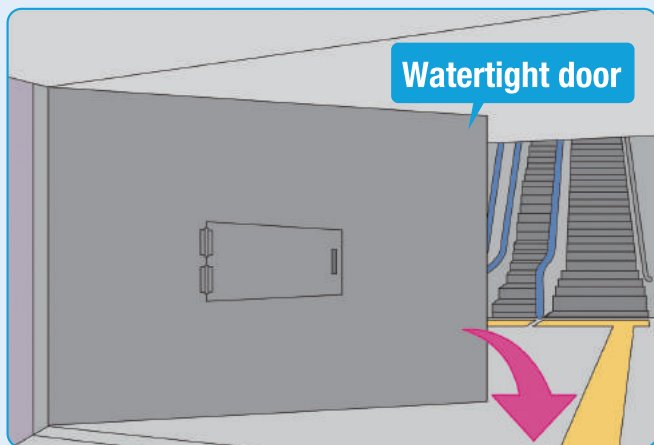


Flood Prevention Measures

▼ On the ground (Oimachi, Shinagawa Seaside, Tennozu Isle Stations)



▼ Underground (Tennozu Isle Station only)



A water barrier plate at the entrance will prevent flooding. In addition, a watertight door is provided in the basement. If a flood should occur, the water will be stopped here, too.

Evacuation Measures



Station alarm equipment

The stationmaster's office is equipped with a disaster prevention monitoring panel so that the station staff and the train crew can immediately guide and evacuate passengers at the time of disaster.



Evacuation route

Multiple evacuation routes from the platform to the ground are secured at all stations. Evacuation routes are equipped with evacuation guide lighting, etc. If the guide lighting in high places cannot be seen due to smoke, passengers can evacuate following luminescent evacuation guide signs on the floors and walls.



Safety Measures



Train service information display system

The train service information display system normally displays train delay information, etc., of each train operator. In the event of a large-scale disaster, information will be provided by an emergency warning broadcast by public broadcaster NHK.



Measures against strong winds

Wind speed gauges are installed to prevent accidents caused by strong winds when trains are traveling along the ground. In accordance with wind speed, regulations may be conducted to reduce speeds or suspend service.



Comprehensive Emergency Training

In order to respond to all types of disasters, we conduct comprehensive training including on train protection, evacuation guidance for passengers, rescue and relief support, report and notification, derailment recovery, facility recovery, etc., under assumptions of emergency situations.



NBC Training

In order to respond to hazardous materials including chemical and biological agents, training on evacuation guidance and detection / removal of suspicious substances are conducted in cooperation with the police and fire departments.



Area MAP

Osaki / Oimachi / Shinagawa Seaside / Tennozu Isle Stations



Tokyo Teleport / Kokusai-tenjijo / Shinonome Stations



Shin-Kiba Station



Legend  Temporary Shelter